

Dear translator,

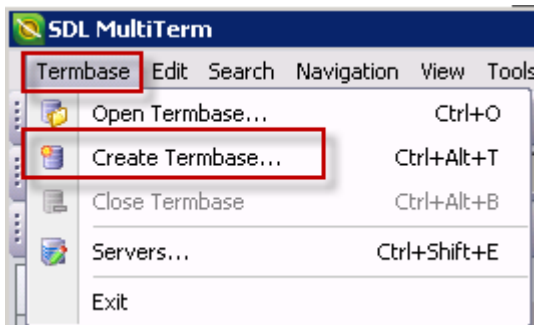
This is a short guide to working with LanguageWire's termbases.

[1] Please download the client's termbase in SDL compatible format from the jobs page

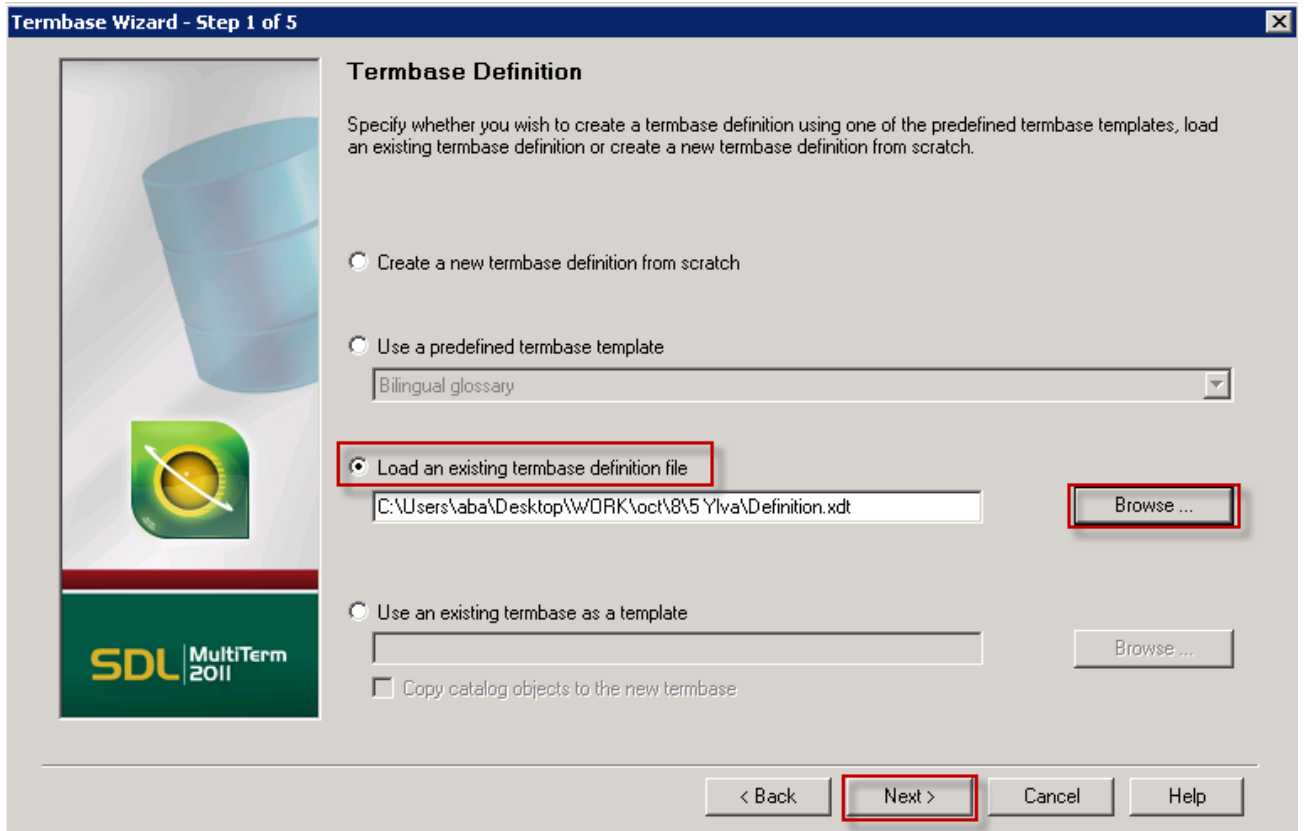


[2] Unzip the files. You'll receive two files: .xml – file with terms; .xdt – configuration file.

[3] Run SDL Multiterm Desktop and create a new termbase

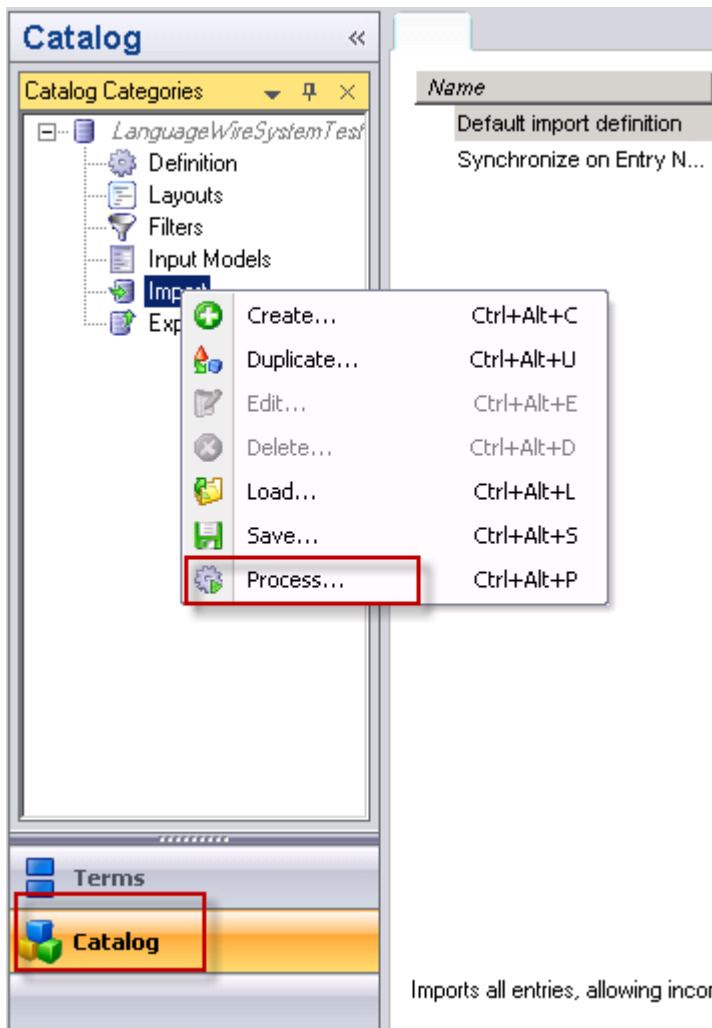


[4] Give it a name, save the file and in the TermBase Creation Wizard choose "Load an existing termbase definition file". Browse for the Definition.xdt file that you just unpacked.



[5] On the next screen give your termbase a name and click “Next” until you get to “Finish”

[6] Once the termbase is created, switch to the “Catalog” tab



[7] To fill your termbase with entries, right click on the “Import” category and choose “Process”.

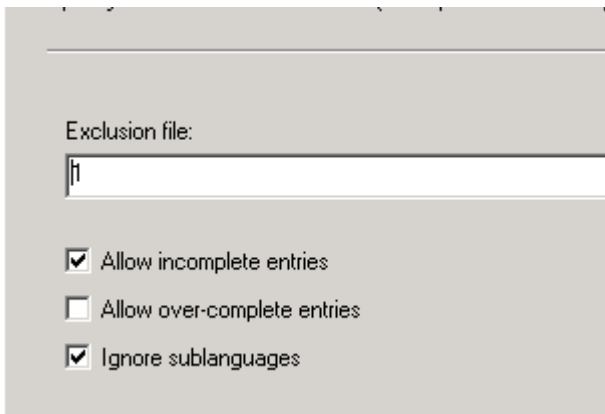
[8] Browse for “Terms.xml”, name “Exclusion file” and click “Next” until you reach “Finish”.

Import file:

Log file:

Fast import (import file is fully compliant with MultiTerm XML)

Perform full reorganization after import

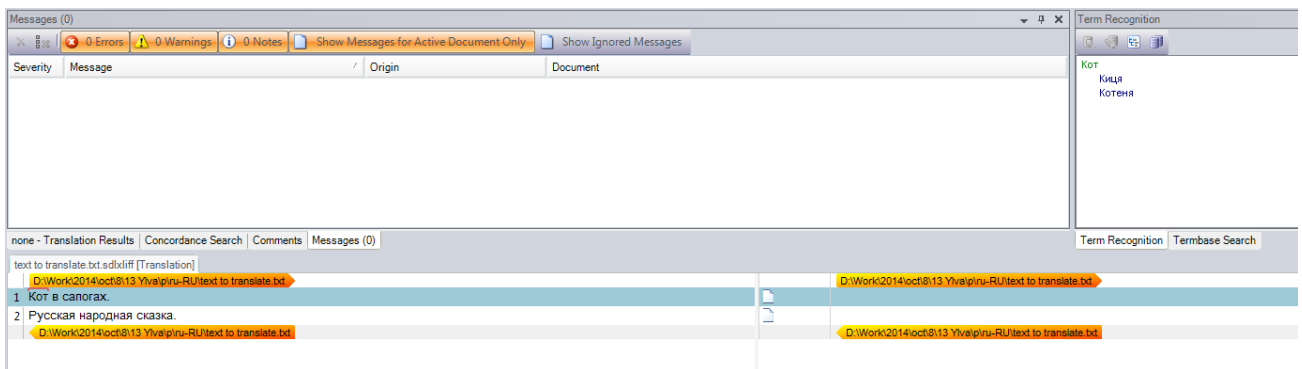


[9] Now your termbase is ready and you can close SDL Multiterm.

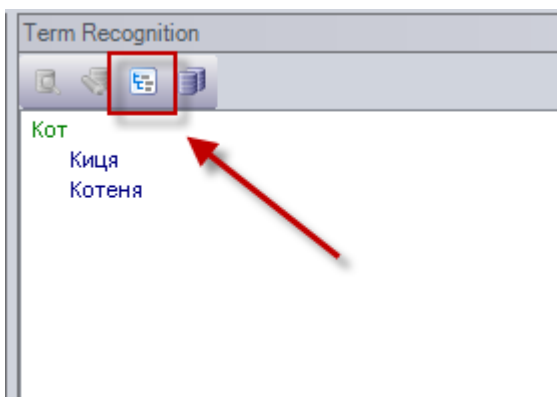
IMPORTANT NOTE:

Please note that all LanguageWire termbases contain not only terms, but approve and use statuses!!!

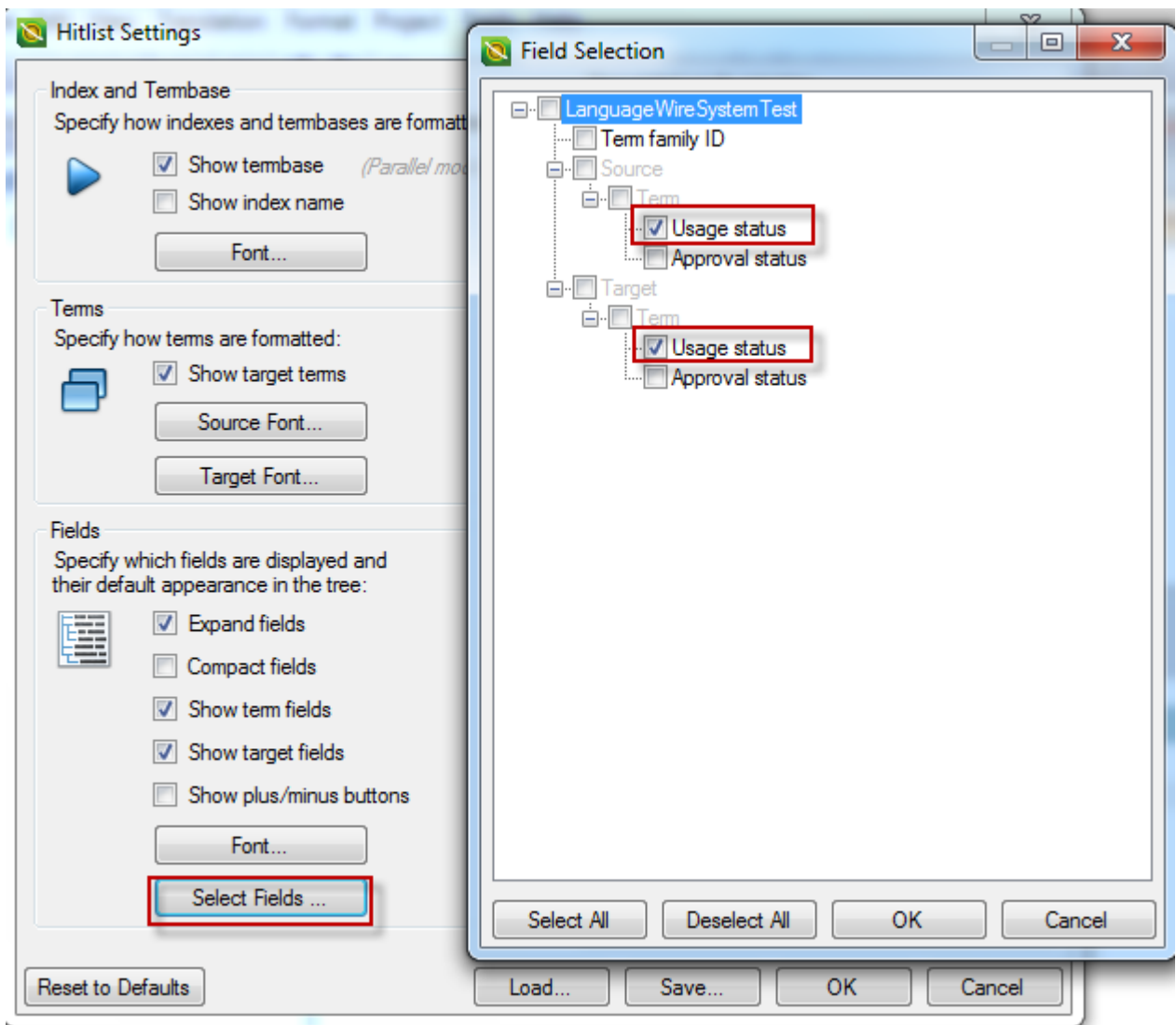
By default these are not shown during translation in SDL Trados Studio, so you see suggestions like this:



Please adjust your view settings before using TermBase.



Press Select Fields and turn on “Usage status” fields.



Now you can see that one term is to be used while another is not.

